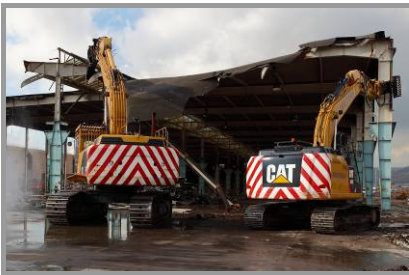
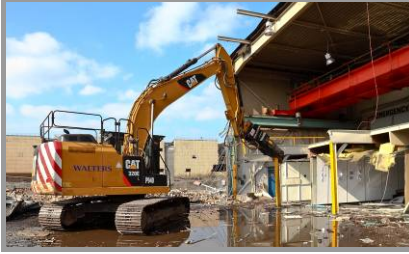


WALTERS

Making Way for New Roads



Project:

Harbour Way

Client:

Costain Limited

Value:

£1.6 million

At-a-glance:

- Asbestos surveys
- Asbestos removal
- Numerous structures
- High rise demolition
- Crushing of 15,000m³

Hirwaun House, Hirwaun Industrial Estate, Hirwaun, Aberdare CF44 9UL

T: 01685 815100

F: 01685 815101

www.walters-uk.co.uk



Walters is accredited to ISO 9001 for Quality Management, ISO 14001 for Environmental Management and OHSAS 18001 for Occupational Health & Safety.

Challenges

Harbour Way, a £107m investment by the EU and the Welsh Assembly Government, was the largest transport project to be supported by the European Regeneration Development Fund (ERDF) and provides a 4.8km link to the M4 at junction 38. The road completed the Port Talbot Peripheral Distributor Road (PDR) and serves the local community and the Tata Steel Plant as well as acting as a vital link to West Wales and the UK motorway network.

Solution

Walters were engaged to demolish a number of redundant structures and basements which used to form part of the Tata owned steel making plant in Port Talbot to clear the way for the road construction. Services were a key issue and Walters worked closely with Tata Steel and Costain representatives to overcome numerous service related problems to ensure that supplies to the steelworks were not disrupted at any stage. The demolition package included the provision of Demolition Asbestos Reports and the removal of all asbestos containing materials as well as the demolition of numerous high rise steel and reinforced concrete framed structures. Over 15,000m³ of inert demolition arisings were crushed by Walters own crushing plant for reuse in the Works.